

- L** LABORATORY
- P** PROCESS
- S** SOFTWARE
- A** AUTOMATION

iPR Ex

ATEX Certified Inline Process Refractometer

Consists of an intrinsically safe, single-certified sensor,
which can be installed in hazardous areas



Zone 0 Ex II 1 G Ex ia IIC T4 Ga,
ATEX 2014/34/EU

SPECIFICATIONS

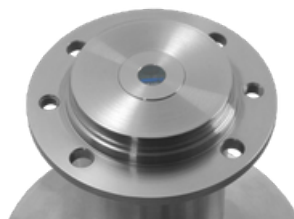
iPR Ex Measuring Head

Standards	ATEX Ex II 1G Ex ia IIC T4 IEC in preparation
Measuring range	1.32000 - 1.52000 RI / 0 - 90 Brix
Resolution	0.00001 RI/n 0.01 Brix
Accuracy	± 0,00014 RI / ± 0.1 Brix at 20 °C
Ambient/storage temperature	- 20° to + 65°C
Temperature sample	- 20° to + 120°C, with cooling by cooler circuit only, electronic max. +65°C
Temperature resolution/precision	0.01°C / ±0.2°C (0° to 70°C)
Process Pressure	0 to 1 MPa, 10 bar
Wetted parts	Sapphire (prism), stainless steel, FKM
Light source / wavelength	LED, 589 nm
Housing	IP67
Connection flange	Apv® , others on request
Interfaces/Connection	ModBus, RS485 and 24V with external Zener barriers
Dimensions / Weight	330mm x 149mm (length x diameter) / 9600g

SPECIFICATIONS

iPR-Ex Control Unit

Operation	1 and 2 measuring headsets are available, connectable with built-in Zener barriers
Display	7" Touchscreen
Interface	Ethernet
DIN rail parts (expandable)	Switch inputs (24 V) and outputs (24 V / relay / 4-20mA) / Communication (RS232 / RS485), CAN, UPC Server
Highlights	Configuration of measuring head and outputs / Adjust switching thresholds and analog outputs / Concentration and other scales user programmable
Power	85V ... 265V 50/60Hz
Housing	IP65



© SCHMIDT + HAENSCH reserved all rights over texts and images Subject to modification without notice 07/24